



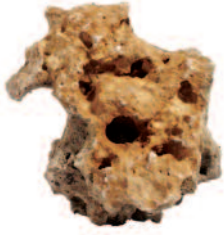
Inhalt Content

| | | |
|------------------------------|------------------------|----|
| Loch- und Riffgestein | Hole- and Reefstones | 01 |
| Buntes Afrika | African Colours | 02 |
| Lava Schiefer Regenbogen | Lava Slate Rainbow | 04 |
| Seewasser | Marine Water | 06 |
| Exotisches Asien | Exotic Asia | 07 |
| Deko Holz | Woods | 10 |
| Sand und Kies | Sands and Gravels | 12 |
| Terrarien | Terrarium | 14 |
| Muscheln | Shells | 16 |
| EAN-Etiketten | EAN-Code-Label | 17 |
| Nano Nature | | 18 |

Loch- und Riffgestein Hole- and Reefstones

S 002

Jug. Lochgestein
jug. holestone



S 004 **Topseller**

Asiatisches Lochgestein | kugelgestrahlt | weiß
white holestone | steelblasted | white



S 010 **Topseller**

Riffgestein | mit Cites
reefstone | with cites



S 012

Riffplatten | mit Cites
reefplates | with cites



S 006

Multilochgestein
multiholestone



S 008 **Topseller**

Aquariumfelsen
moonstone

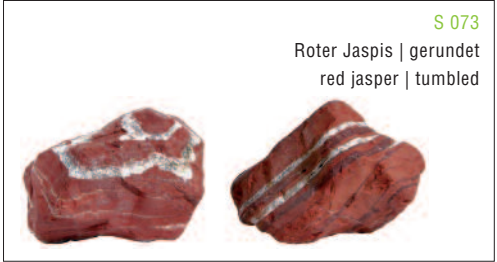


S 007

Nano-Lochgestein | schwarz
nano-hole-rock | black



Buntes Afrika African Colours



S 088

Desert Moon
desert moon



S 130-142

Wetrocks
wetrocks



S 080

Picturestone
picturestone



S 082

Rosenquarz
rosequarz



H 002

Savannenholz | sandgestrahlt
savanna-wood | steelblasted



H 004

Mopani Holz
mopani-wood



H 006

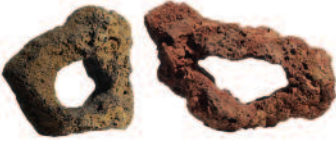
Opuwa Holz
opuwa-wood



Lava | Schiefer | Regenbogen Lava | Slate | Rainbow

S 034

Island-Grotten
island-grotto



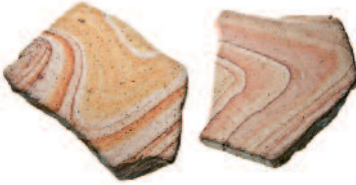
S 026

Regenbogenkugeln
rainbow pebbles



S 022

Regenbogenschiefer
rainbow slate



S 118

Green-Line | 2-Loch
carved green line | 2-hole



S 117

Green-Line | 1-Loch
carved green line | 1-hole



S 024

Regenbogengestein
rainbowstone



S 032

Islandlava
islandlava





S 122
Lava-Lochgestein | 2-Loch
carved lava | 2-hole



S 110
Regenbogen-Lochgestein | 1-Loch
carved rainbow | 1-hole



S 120
Lava-Lochgestein | 1-Loch
carved lava | 1-hole



S 114
Regenbogen-Lochgestein | 3-Loch
carved rainbow | 3-hole



S 116
Regenbogen-Lochgestein | 4-Loch
carved rainbow | 4-hole



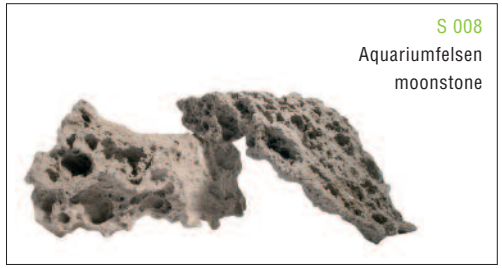
S 020
Schiefer | grau-schwarz
slate | grey-black



S 112
Regenbogen-Lochgestein | 2-Loch
carved rainbow | 2-hole

Seewasser Marine Water

S 008
Aquariumfelsen
moonstone



S 006
Multilochgestein
multiholestone



S 018
Korallen-Tuff
coral-tuff



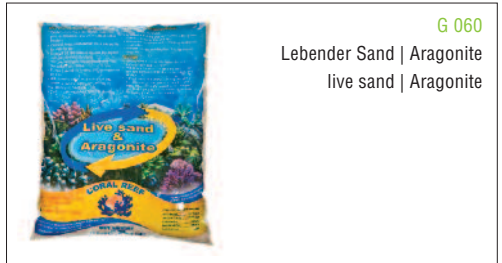
S 012
Riffplatten | mit Cites
reefplates | with cites



S 010
Riffgestein | mit Cites
reefstone | with cites



G 060
Lebender Sand | Aragonite
live sand | Aragonite



G 040 Korallenkies | fein | bis 3 mm
coralsand | fine | up to 3 mm



G 042 Korallenkies | mittel | bis 5 mm
coralsand | medium | up to 5 mm



G 044 Korallenkies | grob | bis 10 mm
coralsand | large | up to 10 mm



Exotisches Asien Exotic Asia

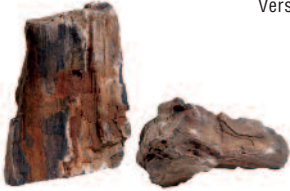
S 040

Mini-Landschaft
mini-landscape



S 043

Versteinertes Holz | bunt
fossilized wood



S 042

Versteinertes Holz
stonewood



S 068

Streifenburgunder
fiery red rock



S 041

Glimmer Wood Rock



S 044

Messerstein
knife-stone



S 046

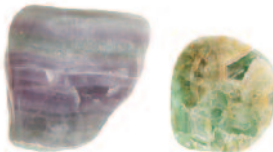
Drachenstein
dragon-stone



S 048 Helle Pagode
light pagoda



S 066 Magic Rock
magic rock



S 069 Donnerkeil
Dark Blue Sky



Exotisches Asien

Exotic Asia

S 062

Schwarzer Schneckenstein
black snailstone



S 098

Märchenstein | 1-4 kg
fairyland stone | 1-4 kg



S 100

Märchenstein | 5-10 kg
fairyland stone | 5-10 kg



S 054

Roter Amöbenstein
pink cloud rock



S 058

See-Gebirge
grey mountain



S 067

Freak Rock
freak rock



S 064

Purple jade Rock



S 063

Samuraistein
samurai-rock



S 090-091

Bergkegel | klein 1-3 kg | groß 9-13 kg
aquariumhill | small 1-3 kg | large 9-13 kg



S 092

China-Berg | horizontal | Höhe 20–25 cm
chinamountain | horizontal | hight 20–25 cm



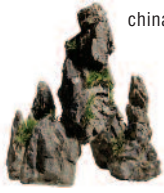
S 096

China-Berg | groß | Höhe 45–52 cm
chinamountain | large | hight 45–52 cm



S 094

China-Berg | vertikal | Höhe 28–32 cm
china mountain | vertical | hight 28–32 cm



S 049

Versteinertes Laub
maple leaf rock



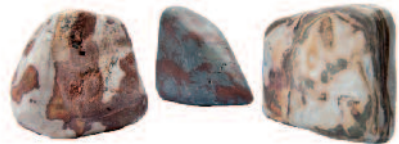
S 036

Nano-Findling | schwarz
nano boulder | black



S 065

Ozeanblume
oceanflower



S 050

Eisstein
ice-rock



S 060

Zebra-Stein
zebra-stone



S 052

Leopardenstein
leopard-stone



S 056

Sandwüstenstein
gobi-rock



Deko Holz Woods

H 062

Yati-Holz | M | ca. 25–35 cm
yati-wood | M



H 002 Topseller

Savannenholz | sandgestrahlt
savanna-wood | steelblasted



H 006

Opuwa Holz
opuwa-wood



H 010

Mangrovenwurzel | L | 30–60 cm
mangrove | L



H 020 | H 022

Kork-Röhren
cork-tubes



H 004

Mopani Holz
mopani-wood



H 023

Korkplatte
cork-plate



H 024

Tronchos
tronchos





H 045-051

Edelliane | verschiedene Größen
prime-liana | different sizes



H 030

Weinstock | M | Länge 40-70 cm
winewood | M



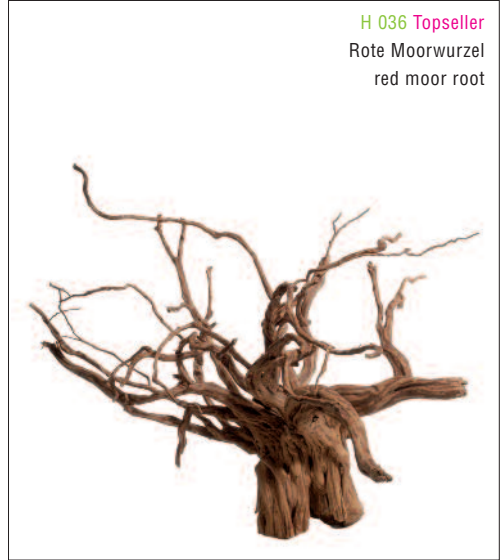
H 070-076

Vuka-Holz | verschiedene Größen
vuka-wood | different sizes



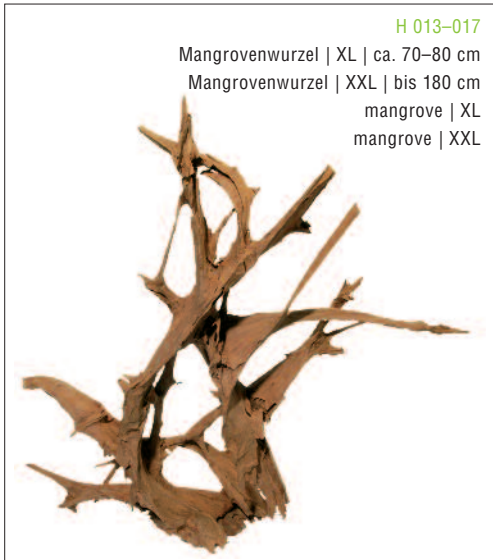
H 080

Flußwurzel
Riverwood



H 036 **Topseller**

Rote Moorwurzel
red moor root



H 013-017

Mangrovenwurzel | XL | ca. 70-80 cm
Mangrovenwurzel | XXL | bis 180 cm
mangrove | XL
mangrove | XXL



H 042

Liane gedreht | Dicke ca. 5-8 cm | Länge ca. 120 cm
liana screw



H 045

Liane gewellt | Dicke ca. 2-4 cm | Länge ca. 100 cm
Liana Snake

Sand und Kies Sands and Gravels

G 002 Aquarienkies | 1–2 mm
aquariumgravels | 1–2 mm



G 004 Aquarienkies | 2–4 mm
aquariumgravels | 2–4 mm



G 006 Aquarienkies | 4–6 mm
aquariumgravels | 4–6 mm



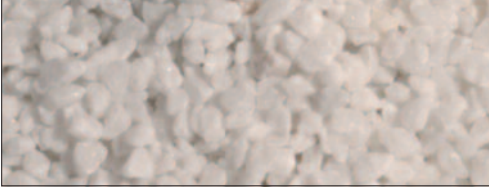
G 010 Aquarienkies | 3–4 mm | 5 kg | rot | natur
aquariumgravels | 3–4 mm | 5 kg | red | naturally



G 012 Aquarienkies | 3–4 mm | 5 kg | grün | natur
aquariumgravels | 3–4 mm | 5 kg | green | naturally



G 014 Aquarienkies | 3–4 mm | 5 kg | weiß | natur
aquariumgravels | 3–4 mm | 5 kg | white | naturally



G 018 Aquarienkies | 3–4 mm | 5 kg | bunt | natur
aquariumgravels | 3–4 mm | 5 kg | multicolour | naturally



G 016 Aquarienkies | 3–4 mm | 5 kg | schwarz | natur
aquariumgravels | 3–4 mm | 5 kg | black | naturally



G 050 Lavasplitt | 2–8 mm
lavasplitt | 2–8 mm



G 040 Korallenkies | fein | bis 3 mm
coralsand | fine | up to 3 mm



G 042 Korallenkies | mittel | bis 5 mm
coralsand | medium | up to 5 mm



G 044 Korallenkies | grob | bis 10 mm
coralsand | large | up to 10 mm



G 020 Roter Wüstensand | 5 kg
red desertsand | 5 kg



G 032 Calzissand | Calcium | 0,5–1,0 mm
calzy sand | calcium | 0,5–1,0 mm



G 030 Glanzkies | schwarz
aquariumground | glancy-black



G 060 Lebender Sand | Aragonite
live sand | Aragonite



G 070–071 Nature Soil | schwarz | fein
nature soil | black | fine



G 074–075 Nature Soil | braun | fein
nature soil | brown | fine



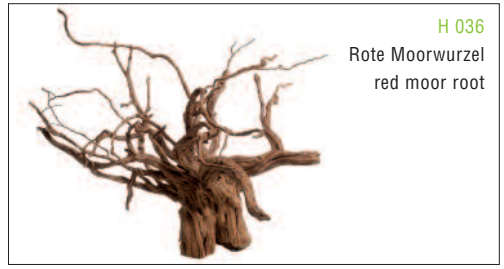
G 072–073 Nature Soil | schwarz | normal
nature soil | black | normal



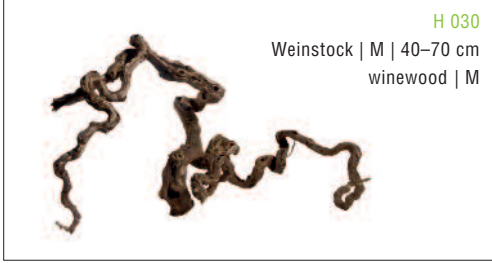
G 076–077 Nature Soil | braun | normal
nature soil | brown | normal



Terrarien Terrarium



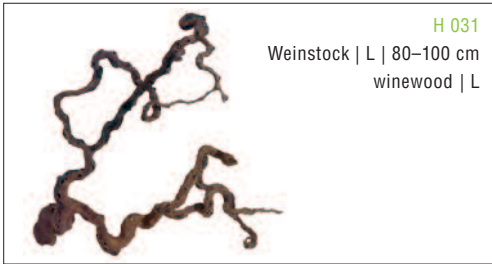
H 036
Rote Moorwurzel
red moor root



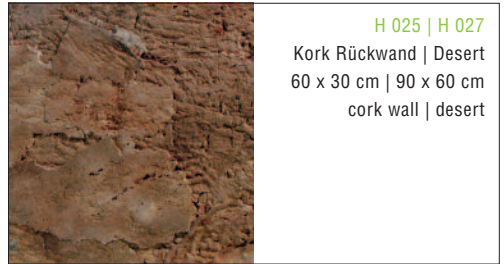
H 030
Weinstock | M | 40–70 cm
winewood | M



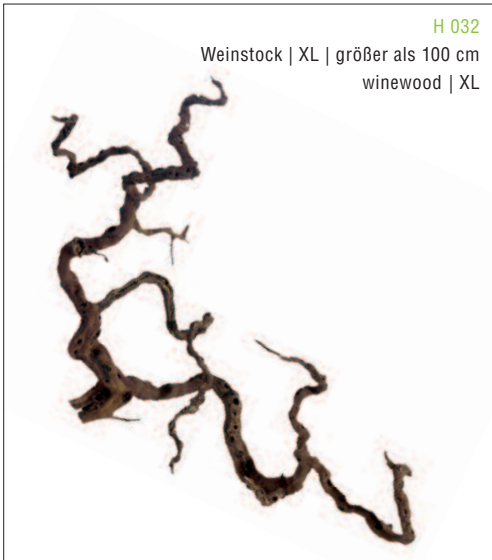
H 084–086
Futterhügel
Feeding hill



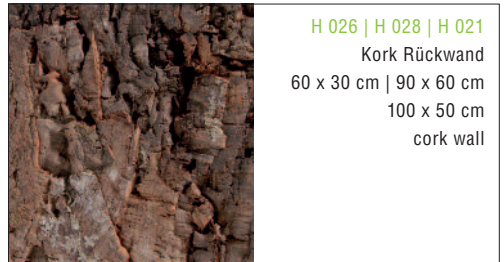
H 031
Weinstock | L | 80–100 cm
winewood | L



H 025 | H 027
Kork Rückwand | Desert
60 x 30 cm | 90 x 60 cm
cork wall | desert



H 032
Weinstock | XL | größer als 100 cm
winewood | XL



H 026 | H 028 | H 021
Kork Rückwand
60 x 30 cm | 90 x 60 cm
100 x 50 cm
cork wall



G 020
Roter Wüstensand | 5 kg
red desertsand | 5 kg

H 070-076

Vuka-Holz | verschiedene Größen
vuka-wood | different sizes



H 041

Liane gedreht | Dicke ca. 4 cm | Länge ca. 200 cm
liana screw



H 045-051

Edelliane | verschiedene Größen
prime-liana | different sizes



H 020 | H 022

Kork-Röhren
cork-tubes



H 090-092

Kletterholz
Climbing wood



H 023

Korkplatte
cork-plate



H 043

Liane gedreht | Dicke ca. 5-8 cm | Länge ca. 200 cm
liana screw



H 024

Tronchos
tronchos



H 045

Liane gewellt | Dicke ca. 2-4 cm | Länge ca. 100 cm
Liana Snake

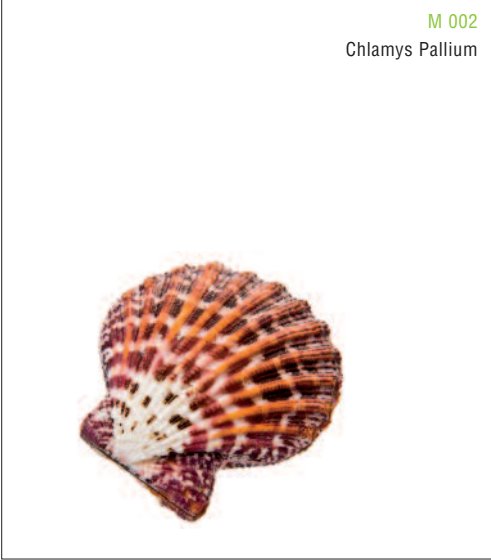


Muscheln Shells

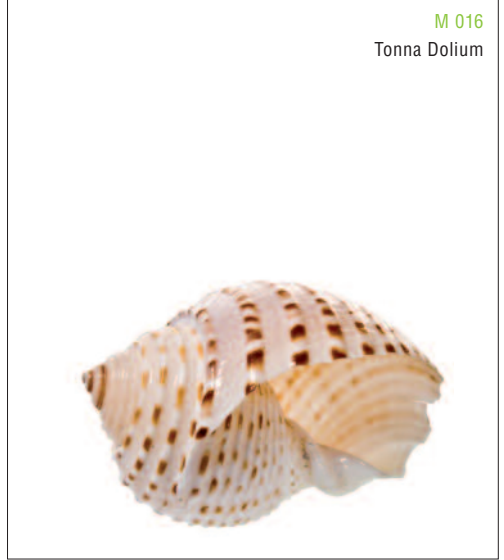
M 014
Strombus Vittatus



M 002
Chlamys Pallium



M 016
Tonna Dolium



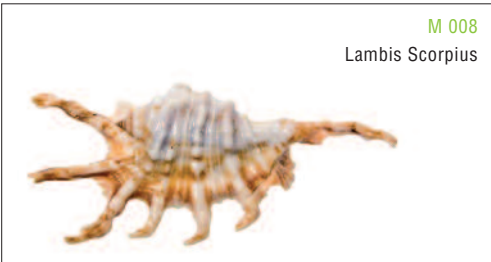
M 010
Tectus Pyramis



M 004
Conus Marmoreus



M 008
Lambis Scorpius



M 012
Turbo Chrysostomus



S 007

Nano-Lochgestein | schwarz
nano-hole-rock | black



S 130-142

Wetrocks
wet rocks

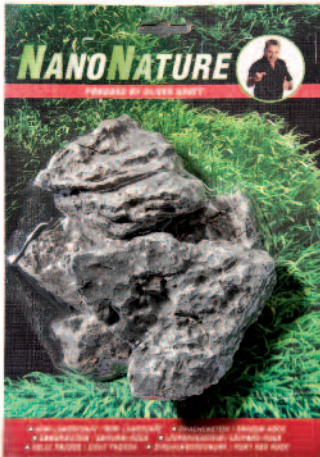


S 036

Nano-Findling | schwarz
nano boulder | black



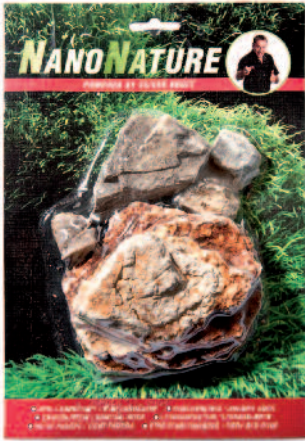
NS 040 NanoNature | Mini-Landschaft
NanoNature | mini-landscape



NS 046 NanoNature | Drachenstein
NanoNature | dragon-stone



NS 048 NanoNature | helle Pagode
NanoNature | light pagoda



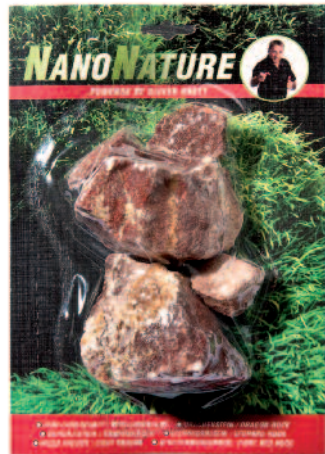
NS 052 NanoNature | Leopardenstein
NanoNature | leopard-stone



NS 063 NanoNature | Samuraistein
NanoNature | samurai-stone



NS 068 NanoNature | Streifenburgunder
NanoNature | fiery red rock





andreas meyer | aquadeco
kapuzinerplatz 5
80337 munich | germany
telefon +49 | 89 | 543 87 30
telefax +49 | 89 | 513 99 867
info@aquadeco.com
www.aquadeco.com

